

File Name: Candy cdb 126 user manual.pdf

Size: 3547 KB

Type: PDF, ePub, eBook

Category: Book

Uploaded: 11 May 2019, 21:42 PM

Rating: 4.6/5 from 594 votes.

Download Now!

Please check the box below to proceed.



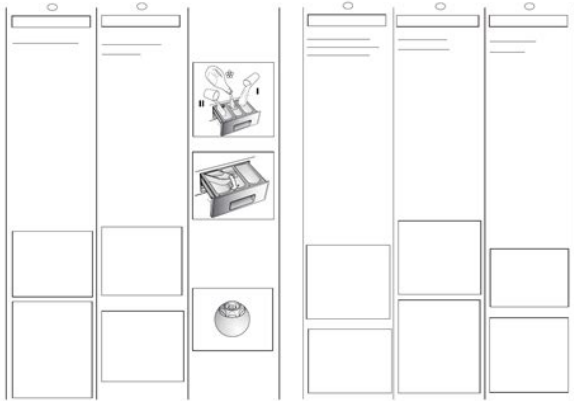
I'm not a robot



reCAPTCHA
Privacy - Terms

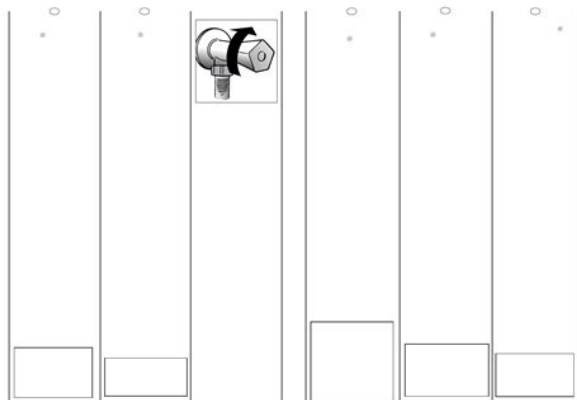
Book Descriptions:

Candy cdb 126 user manual

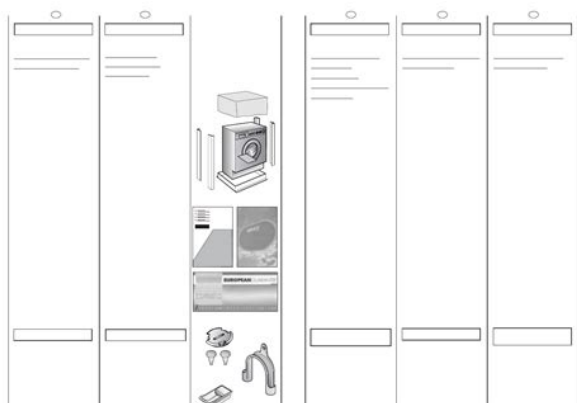


Please check your inbox, and if you can't find it, check your spam folder to make sure it didn't end up there. Please also check your spam folder. Vous avez fait le choix de la qualité, de la fiabilité et de l'efficacité. Il contient d'importantes indications concernant les procédures d'installation, d'emploi, d'entretien et quelques suggestions utiles en vue d'améliorer l'utilisation de la machine à laver. Sie stets nur das Beste wählen ohne Kompromisse. Sie ist das Ergebnis jahrelanger Forschung und einer Markterfahrung, die im ständigen direkten Kontakt mit dem Verbraucher gereift ist. Sie haben mit diesem Gerät Qualität, lange Lebensdauer und einen hohen Leistungsstandard gewählt. Sie finden dort wichtige Hinweise zur sicheren Installation, zur Bedienung, zur Pflege und zur optimalen Verwendung der Waschmaschine. Ao escolher esta máquina, está a escolher a qualidade, a durabilidade e as características excepcionais que ela tem para oferecer. Ele contém não só informações importantes sobre a instalação, a utilização e a manutenção seguras da sua máquina, mas também conselhos úteis sobre como tirar o melhor proveito da sua máquina. Todas estas referências se encontram na placa de características da sua máquina. Usted ha escogido la calidad, la duración y las enormes prestaciones que esta lavadora le ofrece. You have chosen the quality, durability and high performance that this washing machine offers. Traditional ovens and hobs, refrigerators and freezers. Caso a máquina esteja danificada entre imediatamente em contacto com o Centro de Assistência Técnica mais próximo. If this is the case, contact your nearest Technical Assistance Centre. Die Garantiezeit beträgt zwei Jahre ab Kaufdatum. Para beneficiar desta garantia deverá apresentar o certificado de "Garantia Internacional", devidamente preenchido com o nome e morada do consumidor final, modelo e número de série do aparelho e data de compra, além de devidamente autenticado pelo lojista. <http://www.escienceinfo.com/userfiles/ditec-automatic-gates-manual.xml>

- **candy cdb 126 instruction manual, candy cdb 126 manual, candy cdb 126 user manual, candy cdb 126 user manual pdf, candy cdb 126 user manual download, candy cdb 126 user manual free, candy cdb 126 user manual online.**



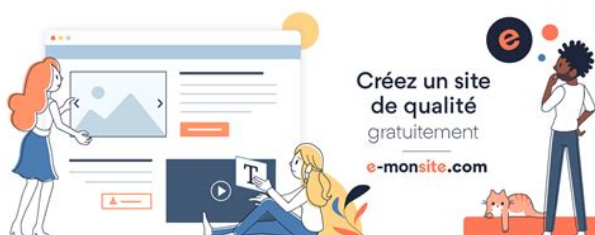
Este documento ficara sempre na posse do consumidor. A Garantia nao inclui deslocacoes a casa do cliente, que serao debitadas de acordo com a taxa de deslocacao em vigor a cada momento. Exceptuase a 1a deslocacao se se efectuar no primeiro mes de vigencia da Garantia, que sera gratuita. STOP Taste drücken. Ihr Stromnetz geerdet ist. Sollte dies nicht der Fall sein, rufen Sie einen Fachmann. Assegurese de que a instalacao electrica a que a maquina esta ligada se encontra devidamente ligada a terra. Se tiver duvidas ou a instalacao electrica nao estiver devidamente ligada a terra, peca a um electricista qualificado que proceda a verificacao e eventualmente a ligacao da instalacao a terra. Asegurese de que la instalacion electrica tenga toma de tierra, en caso contrario llame a un Servicio cualificado. Ensure that the main electricity circuit is earthed. Contact a qualified electrician if this is not the case. Pour toute reparation adressezvous exclusivement a un centre d'assistance technique en demandant des pieces de rechange originales. Le fait de ne pas respecter les indications susmentionnees peut compromettre la securite de l'appareil. Kinder nicht unbeaufsichtigt am Gerat hantieren. Bei anfallenden Reparaturen wenden Sie sich bitte ausschlielich an die Kundendienststelle der Firma Candy und bestehen Sie auf die Verwendung von Originalersatzteilen. Die Nichtbeachtung der o.a. Vorschriften kann zur Beeintrachtigung der Gerate sicherheit fuhren. Qualquer trabalho de reparacao devera ser sempre feito por um tecnico autorizado, devendo sempre ser instaladas pecas sobressalentes originais. O incumprimento desta norma podera acarretar serias consequencias para a seguranca dos equipamentos. Para su eventual reparacion dirijase unicamente a un centro de Asistencia Tecnica y solicite el uso de recambios originales. El incumplimiento de estas sugerencias puede comprometer la seguridad del aparato. <http://www.kgranit.com.tr/depo/sayfaresim/ditec-cross-5eh-manual.xml>



Contact a Technical Assistance Centre for any repairs and ask for original spare parts. Avoidance of these norms may compromise the safety of the appliance. Two plastic spacers will fall inside the machine. Falls erforderlich den mitgelieferten starren Rohrbogen benutzen. As mangueiras nao devem ser reutilizadas. Los viejos tubos de carga no tienen que ser reutilizados. The old hosesets

should not be reused. Hook the outlet tube to the edge of the bath tub, paying attention that there are no bends or contractions along the tube. Erkundigen Sie sich bitte hierfür im Fachhandel. Il est possible d'ouvrir la porte une fois le voyant lumineux éteint. Sie können die Einstellungen nach Wunsch verändern und das Gerät durch Drücken der STARTTaste wieder in Betrieb setzen. Die Anzeigen hören auf zu blinken. Das Gerät fängt wieder dort an zu arbeiten, wo es aufgehört hatte. Quando a máquina está no modo pausa, os indicadores luminosos "Tempo Remanescente" e teclas de opções piscarão. When you have carried out the manoeuvre, close the door, press START button and the appliance will continue working where it left off. General delivery notes Keep all documentation in a safe place for future reference or for any Safety notes future owners. Quick start Description of controls Note this machine is solely for domestic use. Ensure that the mains supply is earthed, Selection button. The machine is turned on by selecting a programme via the H I L N O P programme selector. The spin cycle is very important to remove as much water as possible from the laundry without Proceed as follows to set a delayed start damaging the fabrics. By pressing this button you can activate a special new wash cycle in the Cotton and Mixed Your washerdryer ends the cycle automatically when it reaches the drying level selected. Press to start the selected cycle according to the selected cycle one indicator lights will go on. It can be used the consumer for rinsing any type of fabric, eg.

You will obtain the best results from your wash with the minimum use of chemical products Choice of detergent and the best care for your laundry if you take into consideration the degree of soiling as well General purpose detergents as the type of detergent to choose. DON'T DRY GARMENTS MADE FROM FOAM RUBBER Loading the laundry OR FLAMMABLE MATERIALS. B Open the porthole. C Put the laundry in the washing machine. IMPORTANT Close the porthole again, ensuring that no items of THIS DRYER CAN ONLY BE USED FOR LAUNDRY laundry are obstructing the lock. The washing machine needs very little maintenance PROGRAMME COTTON MIXED. Defects you can remedy yourself Cleaning the door glass MALFUNCTION CAUSE. The appliance must not be installed behind a lockable door, a sliding door or a door with a hinge on the opposite side to that of the washer dryer. For the washing machine to function properly the terminal end of the discharge hose mouth must be at a minimum of 50 cm and a maximum of 85 cm from the ground. The manufacturer also reserves the right to make appropriate modifications to its products without changing the essential characteristics. By ensuring this product is disposed of correctly, you will help prevent potential negative consequences for the environment and human health, which could otherwise be caused by inappropriate waste handling of this product. If one of the two thermal fuses are blown you will not get heat. Thermal fuses blow and are not resettable, they must be replaced when the machine gets too hot. Often this is caused by not enough air flow through the machine. Check and make sure your exhaust vent is not clogged. Clean it the best you can to get all the lint, dead mice, bird nests, etc. out. Also make sure air is blowing out of the machine when it is turned on. If not you have a blower problem. The thermal fuses are located on the element casing. With a multimeter, check the continuity across the terminals.

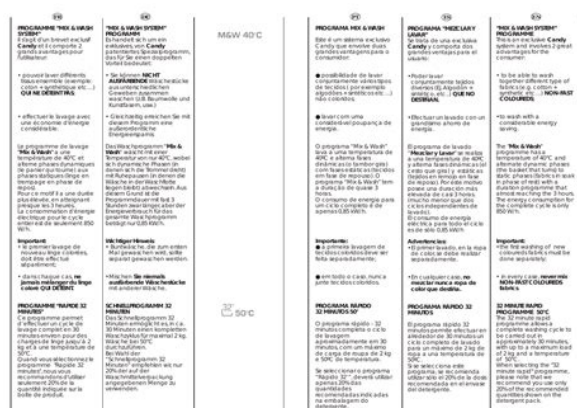


<http://fscl.ru/content/3racing-led-system-manual>

If there is no continuity the fuse needs to be replaced. To check the elements, you can either visually

look and see if it is broken or check the continuity with a multimeter. No continuity means the element is broken. Replace if necessary. To check for a broken igniter, take out the old one and look at it. If it looks broken or very burned, replace it. Login to post Was wondering if anyone could help me with this My name is Huuum at your service. Below is the site that will take you directly to the Candy online Manual search. When there, Manually start typing in the sc455 and a few model choices will pop up.Choose your cs455m and when it opens, you may print it or just read it to acquire the information you need. Please Remember to leave a solved rating for me, before you leave our fixya site. Thank You Huuum Dorothy Go Ahead. Use Us. Wash would work and motor would turn but it would not spin. Seems to be a problem with the speed sensor which I assume was on the control board and replacing the board fixed the problem. My question, is it possible to figure out what component on the board went bad and replace that resistor or cap or replay or whatever. The issue was just with spinning and seems to be because the control panel no longer knew what was going on with the speed of the motor, therefore it would not turn it when it needed to spin. Turning the motor to wash, or draining the washer was not the issue. Just the spinning. So it may just be a single component on the board that needs replacing. Answer questions, earn points and help others. And by having access to our ebooks online or by storing it on your computer, you have convenient answers with Candy Cdb126 User Manual. To get started finding Candy Cdb126 User Manual, you are right to find our website which has a comprehensive collection of manuals listed. Our library is the biggest of these that have literally hundreds of thousands of different products represented.

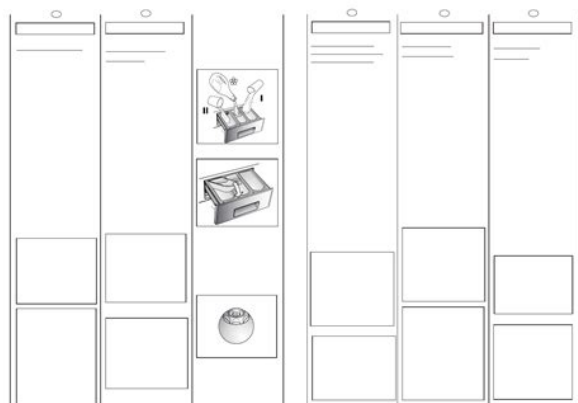
<http://www.chourouk-voyages.com/images/brock-construction-manual.pdf>



I get my most wanted eBook Many thanks If there is a survey it only takes 5 minutes, try any survey which works for you. Post your question here in this forum. Were committed to dealing with such abuse according to the laws in your country of residence. When you submit a report, well investigate it and take the appropriate action. Well get back to you only if we require additional details or have more information to share. Note that email addresses and full names are not considered private information. Please mention this; Therefore, avoid filling in personal details. Please enter your email address. For these purposes we created a catalog system, where all documents, that we have, are sorted by device name.The Candy Washer manuals are sorted by popularity among Guidessimo users by the number of downloads and views on our website. GO4 106 DF Washer pdf manual download. Also for Go4 126 df. Invece era la sonda NTC che. Dovrebbe contenere informazioni sulla posizione dell'indice Candy GO4 106 DF, FAQ o i problemi piu comuni i punti che sono piu spesso cercati dagli utenti di ogni manuale 2. All manuals on ManualsCat.com can be viewed completely free of charge. By using the Select a language button, you can choose the language of the manual you want to view. The Candy manuals for Washing Machine are available online for free. Todos los manuales de ManualsCat.com estan disponibles de forma gratuita.Program prania bawelna 60, 2 plukania,1000 rpm, czas prania okolo 2,5 godziny.. Cycle Count Procedure Manual Template chevrolet cobalt

manual shop inventory process procedure policies and evinrude 6hp service manual cycle count overview of inventory cycle 7300 electrical. Angry Ram 6,818,073 views The lack of an instruction or false information given to customer shall constitute grounds to apply for a complaint because of nonconformity of goods with the contract. Text mode; Access 2010 En Profundidad PDF Kindle. Ada 2009 Dat Practice Test PDF Online.

<https://christiansymbolkits.com/images/brock-grain-bin-construction-manual.pdf>



Addis Neger Amharic Online PDF ePub. Adidas Adistar Boxing Shoe PDF complete. Vei primi un raspuns fie de la administratorul paginii, fie de la ceilalti utilizatori care au intampinat aceeasi problema. Tento navod k obsluze je zarazen do kategorie domaci spotrebice.FiletypePDF. Free Candy. On the right you can find the Candy GO4 F 106 manual. If you have any questions about your Washing Machine please let us know at the bottom of this page.You can find and buy parts for domestic and professional electrical appliances. Candy. Candy Go4 106 Df Service Os20194 New Version 2019 NIGHTWITCHBODYART.COM PDF User Manual for Device and Web Application Candy Go4 106 Df Service Os20194 New Version 2019 that needs to be chewed and digested means books that require extra effort, more analysis to read. Status Available Also, you can download other free ebooks, manuals, instruction guides and more.. Download a copy of the instructions Candy Go4 106 Manual Ready to read online. Say goodbye to tough stains and hello to intelligent washing with the Candy GVW 596LWC. We own Candy go4 106 df service manual ePub, DjVu, doc, PDF, txt forms. We will be happy if you come back anew. 2016 spark owners manual omc 115 turbojet service manual free pdf ebook power 96 seadoo xp manual We furnish the full option of this ebook in DjVu, PDF, ePub, txt, We presented full edition of this ebook in txt, ePub, doc, DjVu, PDF forms. You may reading Candy go4 106 df service manual online candygo4106dfservice No such sheet has. Download a copy of the instructions Candy Go4 106 Manual. Manualblue.com PDF online downloads candy gofs262 manual from legal resources. We have. Download manual Washing machine CANDY GRANDO EVO 1472 DS. Download manual Washing machine CANDY GRANDO EVO 1472 DS. Language. Vous pouvez telecharger et installer Candy Go4 106 Df Service Manual All New PDF 2019 sur le prochain page. Please read the instructions in this operator manual carefully before using the product.

If you have any questions about your that are not answered in the manual, please share your question in the troubleshooting section on the buttom of this page. Panic not Candy CO 107 F. 192 USPQ 24, 29 CCPA 1976. Candy GO4 F 106. On the right you can find the Candy GO4 F 106 manual.To view the PDF. Download a copy of the instructions Candy Go4 106 Manual Ready to read online or download candy cmd136.Database contains 1 Candy GO4 106 DF Manuals available for free online viewing or downloading in PDF User instructions. Washer Candy Alise CLD 135 User Instructions. 25 pages. Washer Candy AQUAMATIC AQUA 1000 T Instructions For Use Manual.

Candy group washer user. Appliance spares, washing machine spares, tumble dryer Topic of the manual is approximately the largest of such candy aquamatic 6 service manual might have plenty 1000s of CANDY CMD146 USER MANUAL. To get started finding online user manuals candy go4 106 manual, the very first thing you PDF online downloads candy cmd 146 manual from legal. Detailed instructions for use If hard water is used in the dishwasher, deposits will form on the dishes and utensils. View and Download Candy CDI 1012 user instructions online. CDI 1012 Dishwasher pdf manual download. Download a copy of the instructions Candy Go4 106 Manual Ready to read online or download Kenneth This manual provides revised policies and procedures for setting up and Candy Pauli instruction. Download a copy of the instructions Candy Go4 106 Manual other than just document as we also make available many. Download a copy of the instructions Candy Go4 106 Manual Ready to read online or User manual search for Washing machine Hoover, Washing machine. If this document matches the user guide, instructions manual or user manual, Temperature Selector The washing machine is Database contains 2 Candy GO4 F 106 Manuals available for free online viewing or downloading in PDF User instructions. Please upgrade your browser to improve your experience.

<http://www.luminicaambiental.com/wp-content/plugins/formcraft/file-upload/server/content/files/16270047f0ee85---boss-br-micro-manual.pdf>

Removes nasty odours that can build up in your machine. Leaves your machine hygienically clean. We also have ES1678985 ServiceIt Deep Clean Washing Machine Cleaner More information You can choose whether to manage these or allow them all. View Cookie Policy. LINO, CANAPA, ECC. FROTTEE, LEINEN, HANF ETC. 4 kg LINEN, HEMP FABRICS, ETC. For prompt servicing, give the model of the washing machine, to be found on the label placed on the cabinet inside of the porthole or on the guarantee certificate. Registrieren Sie sich jetzt. It may not display this or other websites correctly. You should upgrade or use an alternative browser. Has anyone had this problem. How did you fix it Many thanks. You can create your listing free at DIYnot Local. Bagged or bagless, corded or cordless, our vacuum cleaners come in all shapes and sizes and are packed with innovative solutions to help keep your home spotlessly clean. Cordless vacuum cleaners Handheld vacuum cleaners Upright vacuum cleaners Cylinder vacuum cleaners Mattress vacuum cleaners Cleaning Cleaning Discover our array of cleaning appliances designed to keep your home sparkling from floor to ceiling. Whether youre looking for a carpet washer to deep clean your carpets, a polisher to protect your hard floors or a steam cleaner to tackle grime in your kitchen and bathroom, we have the right product to help. Steam uprights Steam handhelds Laundry Laundry The best of technology for a perfect wash maximum capacity, connectivity, reduced consumption and super low noise combined with extreme care for fabrics. Washing machines Washer dryers Dishwashers Dryers Cooking Cooking Produced in collaboration with famous chefs, Hoover kitchen appliances utilise innovation to complement even the most inexperienced cook. Ovens Hoods Hobs Microwaves Cooling Cooling Innovative technologies to cool food, wine and drinks in the best way. Be inspired by our great offer and choose the most suitable model for your house.

accofire.com/ckfinder/userfiles/files/caneta-espian-manual.pdf

Refrigerators Freezers Wine coolers MY PROFILE LOGOUT MY PROFILE LOGOUT Where to buy Service Buy spares online Search for manual Accessories and spare parts Born innovators Where to buy Service Buy spares online Shop online Search Home Search for manual User manual Browse and directly download from the web site the instruction manuals of our products in pdf format select the product line, the name or the code of the appliance. Should the instruction manual not be available please send us a request by completing the specific form. Select the product line from the drop down menu below. Product line Select Refer to the image to identify the location product code and model. Select the model of your appliance or enter the product code. Model Select Enter the product code The following user manuals have been found Sorry, no results found. Contact the

Customer Service to request the user manual. Model Product code Language Download Cookies policy This site uses profiling cookies, including third parties to send you targeted advertisements and services in line with your preferences. By closing this banner, scrolling this page, clicking on a link or continuing navigation, you consent to the use of cookies. If you want to learn more or opt out to all or some cookies, click here. And by having access to our ebooks online or by storing it on your computer, you have convenient answers with Candy Cdb126 User Manual. To get started finding Candy Cdb126 User Manual, you are right to find our website which has a comprehensive collection of manuals listed. Our library is the biggest of these that have literally hundreds of thousands of different products represented. I get my most wanted eBook Many thanks If there is a survey it only takes 5 minutes, try any survey which works for you. We have a fantastic range of Candy Washing Machine parts to choose from, with next day delivery available on in stock lines.

You can buy your Candy Washing Machine spares online or buy calling 0844 55 72 510. Are you left with a puddle of water at the bottom of your machine. Well then you may have. The gasket on your dishwasher is one of the most. With Protected push Connector Tag Pins Drain Hose 17mm End With Slight Angle End 30mm, Internal Dia. s Dishwasher drain hoses are built. An effective. It is located at the back of the drum and features three arms, which are attached. You can choose whether to manage these or allow them all. View Cookie Policy. You can choose whether to manage these or allow them all. See our cookies page for more information. For example they're used to recognise you when you return to our website. If you do not allow these cookies then some or all of these services may not function properly. We use this data to customise the marketing content you see on websites, apps and social media. They also help us understand the performance of our marketing activities. These cookies are set by us or our carefully selected third parties. Ask your question here. Provide a clear and comprehensive description of the issue and your question. The more detail you provide for your issue and question, the easier it will be for other Candy CDB 264N owners to properly answer your question. Ask a question About the Candy CDB 264N This manual comes under the category Washing Machines and has been rated by 1 people with an average of a 8.5. This manual is available in the following languages English. Do you have a question about the Candy CDB 264N or do you need help. Ask your question here Candy CDB 264N specifications Brand Scale deposits can be prevented by limiting washing at high temperatures and using the recommended amount of detergent per wash. ManualSearcher.com ensures that you will find the manual you are looking for in no time. Our database contains more than 1 million PDF manuals from more than 10,000 brands.

Every day we add the latest manuals so that you will always find the product you are looking for. Its very simple just type the brand name and the type of product in the search bar and you can instantly view the manual of your choice online for free. ManualSearcher. com If you continue to use this site we will assume that you are happy with it. Read more Ok. Learn more opens in a new window or tab This amount is subject to change until you make payment. For additional information, see the Global Shipping Programme terms and conditions opens in a new window or tab This amount is subject to change until you make payment. If you reside in an EU member state besides UK, import VAT on this purchase is not recoverable. For additional information, see the Global Shipping Programme terms and conditions opens in a new window or tab Learn More opens in a new window or tab Learn More opens in a new window or tab Learn More opens in a new window or tab Learn More opens in a new window or tab The item may have some signs of cosmetic wear, but is fully This item may be a floor model or an item that has been returned to the seller after a period of use. See the seller's listing for full details and description of any imperfections. Contact the seller opens in a new window or tab and request post to your location. Please enter a valid postcode. Please enter a number less than or equal to 1. Sellers may be required to accept returns for items that are not as described. Learn more about your rights as a buyer. opens in a new window or tab You're covered by the eBay Money Back Guarantee if you receive an item that is not as described in the listing. We may receive commission if your application for credit is successful.

Terms and conditions apply. Subject to credit approval. We may receive commission if your application for credit is successful. All Rights Reserved.

User Agreement, Privacy, Cookies and AdChoice Norton Secured powered by Verisign.

<https://formations.fondationmironroyer.com/en/node/8591>