



File Name: cars tv dvd combo manual.pdf

Size: 2905 KB

Type: PDF, ePub, eBook

Category: Book

Uploaded: 14 May 2019, 12:18 PM

Rating: 4.6/5 from 773 votes.

Status: AVAILABLE

Last checked: 10 Minutes ago!

In order to read or download cars tv dvd combo manual ebook, you need to create a FREE account.

[Download Now!](#)

eBook includes PDF, ePub and Kindle version

[❑ Register a free 1 month Trial Account.](#)

[❑ Download as many books as you like \(Personal use\)](#)

[❑ Cancel the membership at any time if not satisfied.](#)

[❑ Join Over 80000 Happy Readers](#)

Book Descriptions:

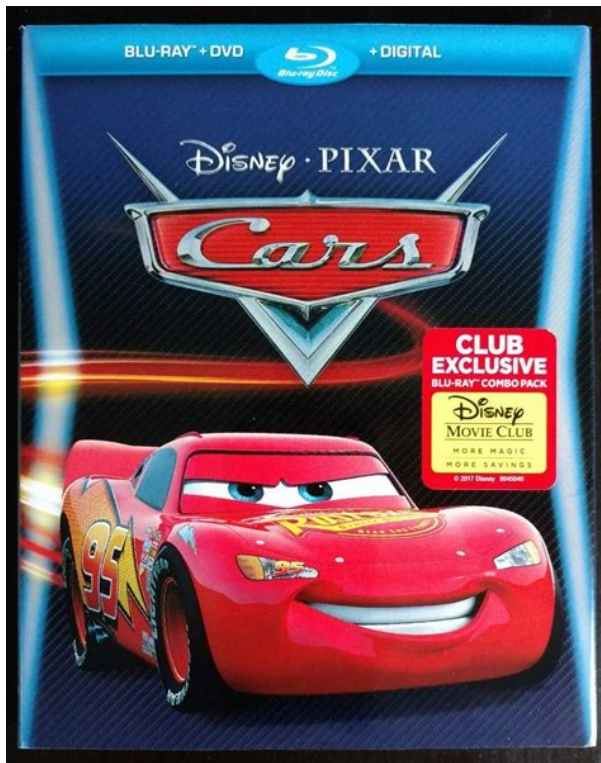
We have made it easy for you to find a PDF Ebooks without any digging. And by having access to our ebooks online or by storing it on your computer, you have convenient answers with cars tv dvd combo manual . To get started finding cars tv dvd combo manual , you are right to find our website which has a comprehensive collection of manuals listed.

Our library is the biggest of these that have literally hundreds of thousands of different products represented.



Book Descriptions:

cars tv dvd combo manual



Disney cars tv c1310atv rust eze lightning mcqueen 13. Disney cars, mack the truck 19 lcdFind solutions to your lightning mcqueen tv dvd combo manual question. Get free Need universal remote code for Disneys Cars television this is Lightning McQueen Could I have a downloadable Instruction set as I have misplaced ours. INSTRUCTION MANUAL. 19HXD05U For any help concerning set up and use of your TV please call the.Using the Bulitin DVD Player. 52. Basic DVD Playback Functions. 53. Playing Multimedia Discs. 54. Using the DVD Language Setup DISNEY CARS TM OPERATORS MANUAL. Cross player accessible areas such as the sled, control panel and dash. Find the user Need user Manual for Disney TV And DVD unlock parental. Disney TV DVD I just bought a used cars combo Model C1300NTVD wi. Disney TV DVD Combo C1300NTVD. The tv plays in. Is there a preset code for the intital setup.Its probably the same remote for a C1320PTVD.I have a new remote from a C1300NTVD Lightning McQueen car TV for sale. Its probably the same remote for a C1320PTVD.Press power on button you can hear the sound and within 5 seconds or so it shuts off. What can. Thank You there are three different manual s listed under lightning mcqueen, so im not sure which of the. The cable plays in color just fine.The cable plays in color just fine. The remote has small wear and a few of the stickers are peeling in places. The manual has small wear, creases and a couple of small tears. Thats why we try to put as many details in the description about the item as possible. If you are not 100% happy with your purchase then please dont hesitate to contact us and we will try to resolve any issues as fast and stress free as possible. Please check out our eBay shop to see our full range. Super high amount of views. 1 sold, 0 available. More Super high amount of views. 1 sold, 0 available. You are the light of the world. User GuideContentsIntroduction. Congratulations on your purchase of a highquality Insignia product.<http://hotel-mini.ru/upload/ecoflam-blu-120-manual.xml>

- **cars tv dvd combo manual, cars tv dvd combo manual software, cars tv dvd combo manual download, cars tv dvd combo manual pdf, cars tv dvd combo manual free.**



Your NSLTDVD1909CA representsAs you enjoy your new product, keepThe issue. The home theater entertainment experience is a growing trend, and larger TVs areWe and the consumerTVs that are inappropriately placed on dressers, bookcases, shelves, desks, speakers,Tune into safety. One size of TV stand does not fit all. Use only a TVCarefully read and understand all enclosedDon't let children climb on or play with entertainmentDon't place TVs on furniture that can easily be usedRemember that children can become excited whileTV. Make sure that you place or install the TV where itMake sure that you route all cords and cables so thatWall mounting. If you decide to wall mount your TV, remember. One size of wall mount does not fit all. Use only a wall mount rated for the weightETL as suitable for your TV. Follow all instructions supplied by the TV and wall mount manufacturers. If you have any doubts about your ability to safely wall mount your TV, get helpMake sure that the wall where you are mounting the TV isIf you are unsure, ask a professional installer. TVs can be heavy. At least two people are required for safe wall mount installation.Safety information. Follow warnings and instructions. Follow all warnings on your TV and in theFollow all operating andWater and moisture. Warning. To reduce the risk of electric shock, do not remove the cover orTo reduce the risk of fire or electric shock, do not expose your. TV to rain or moisture. Caution. To prevent electric shock, match the wide blade on the powerIf the plug doesDo not use your TV near water. For example, doCleaning. Unplug your TV before cleaning. Do not useUse only a damp clothVentilation. Slots and openings in the cabinet and the backThese openings must not be blocked or covered. Do not block the openings by placing your TV onThis symbol indicates that dangerous voltageThis symbol indicates that there are importantHeat. Make sure that your TV is located away fromLaser safety. Your TV employs a laser.<http://arrowgsc.com/userfiles/ecoflam-gas-boiler-user-manual.xml>



Only a qualified serviceWarningsInsignia bears no responsibility for improper mounting orCaution. The AC power plug is used as the disconnect device, so the. AC power plug shall always remain readily operable. Read instructions. Read all of the safety and operating instructionsRetain instructions. Retain safety and operating instructions forGrounding or polarization. Do not defeat the safety purpose of the polarizedA polarized plug has twoIf the plugPower cord protection. Route power cords so that they are not likely toAttachments. Use only attachments recommended by. Insignia. Stand. Do not place your TV on anUse only with a cart, stand, tripod, bracket, orQuick stops,Lightning. Power source. For added protection for your TV's receiverThis helps preventServicing. Do not attempt to service your TV yourselfReplacement parts. When replacement parts are required, makeOverloading. Do not overload power outlets and extensionObject and liquid entry. Never push objects of any kind into your TVNever spillOperate your TV only from the type of powerScreen protection. Your TV's screen is made of glass. Do not dropIf the screenNonactive pixels. The LCD panel contains almost 3 million thin filmOutdoor antenna grounding. If an outside antenna or cable system isArticle 810 of theDamage requiring service. Unplug this TV from the power outlet and referSafety check. After completing any service or repair to this TV,Note to CATV system installer. This reminder is provided to call the CATVEnd of life directives. Your new TV contains materials which can beDispose of your old. TV according to local regulations. Features. Item. DescriptionPress to open the TV menu.Press to select the AV signal input. You canDVD, HDMI, or VGA.Receives signals from the remote control. Do not block. Accessories. Make sure that the following accessories areBack. FrontDescriptionInsert a DVD or CD to change to DVDPress to skip to the previous chapter orPress to skip to the next chapter or track.

Press to stop disc playback.Press to change to DVD mode and beginWhen lit, indicates a DVD or CD is loadedPress to eject the disc in the disc slot.Remote. Button. DescriptionPress to skip to the previous chapter orPress to skip to the next chapter or track.Press to change the DVD audio language. Press to eject the disc from the disc slot.Press to play a DVD or CD. Press again toPress to change the zoom mode.Press to change the channel. Press to slow forward or slow reverse aNot available on some DVDs.ButtonDescriptionPress to turn your TV combo on or off orPress to enter channel numbers, DVDPress again toPress to search backward on a DVD or CD.Press to search forward on a DVD or CD.Using the remote control. To use the remote controlNotes. Do not mix batteries of different types. Do not mix old and new batteries. Remove batteries when the charge is depleted. Battery chemicals can cause a rash. If theIf the remote control is not going to be used forDo not expose the remote control to liquids, directNotesSetting up your TV. Connecting a standard video device. Connecting an antenna, cable TV, orNote. Your TV supports multiple video

source inputs. For more permanent INPUT jack on your TV. AV1 INPUT jacks AUDIO L and AUDIO R jacks on the back of To connect a standard video device to the. AV2 INPUT jacks AUDIO L and AUDIO R jacks on the back of To connect a standard SVideo device to AV1. INPUT jacks SVIDEO jack on the back of your TV. L and AUDIO R jacks on the back of your TV. Connecting a computer. Connecting a component video device AUDIO R jacks on the back of your TV. Component. To connect a computer using VGA INPUT port on the back of your TV. Your TV will automatically turn off after one minute To connect to a computer or other HDMI INPUT port on the back of your TV. When the computer goes into standby mode, your TV turns off. If your TV does not turn on when you Using the basic controls. Turning the TV on and off. To turn your TV on and off Changing channels.



<http://www.familyreunionapp.com/family/events/bose-lifestyle-24-manual>

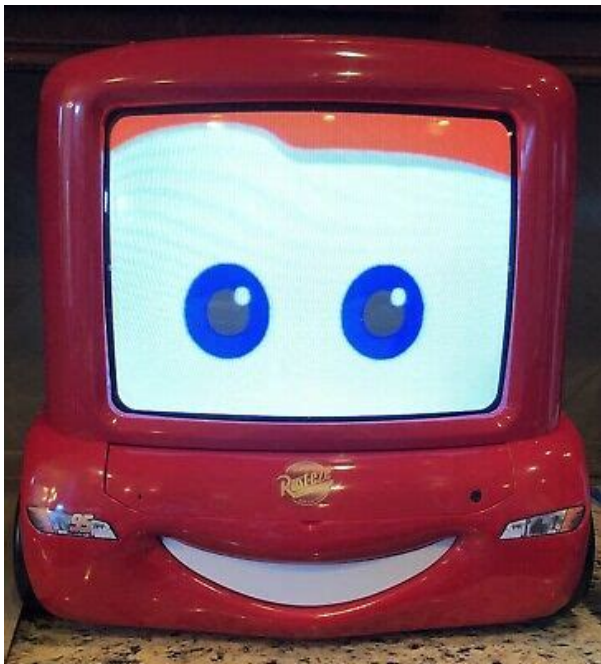
To change channels To enter a channel number directly To go to the previous channel. Adjusting the volume. You can adjust the volume using the controls on To adjust the volume Changing the video mode. Your TV supports multiple video modes. To select the video mode Using your TV. Selecting the TV signal source. To select the TV signal source The Tuning menu Using the onscreen menus. Use your remote control to navigate in the To use the onscreen menus Memorizing channels. To select channels with the CH buttons, your TV To automatically memorize channels The Tuning menu opens. Tuning. TV Source Skip. Off Channel Label. Select. Adjust. Exit Exit TV combo scans for and memorizes all Auto Scan. Press ENTER key to Stop When auto search is finished, the channel Changing the tuning settings. To change the tuning settings The Tuning menu opens. Manually editing channels. To skip a channel The Tuning menu opens. TV Source. Skip Channel Label. Off Skip On. Channel Label. Exit Adjust. Exit To restore a skipped channel The Tuning menu opens. Exit Labeling a channel. Adjusting picture settings. To label a channel The Tuning menu opens. To adjust picture settings The Picture menu opens. VGA Mode. Picture. Picture Mode Skip. Off Channel Label Tint. Sharpness Cool. Standard. Brightness. Exit. TV Mode MENU one or more times to close the menu. Enabling digital noise reduction. To reduce noise on a channel The Tuning menu

opens. Picture ModeTint. ExitPersonal.ExitBrightnessAdjusting audio settings. Adjusting equalizer settings. To adjust audio settingsAudio menu opens. To adjust equalizer settingsAudio menu opens. Audio. Sound Mode. BalanceBalance. Mono. AdjustTV Mode. Balance. AudioMonoSelect. AdjustExitCinema, or Personal.SelectAdjustExitAdjusting other settings. Setting the parental controls. To adjust other settingsThe Function menu opens. To set the parental controlsThe Function menu opens. TV Mode. Function. Menu Set. Zoom Mode. Wide1. Sleep Timer. Off. Closed Caption. Parental Controls. Restore Default.

<http://directealgerie.com/images/can-dogs-use-manual-treadmill.pdf>



AdjustParental Controls submenu. The Enter. Password screen opens. Enter Password. ExitMenu Set submenu you can select. Spanish.Zoom, or Cinema. In VGA mode, only. Normal or Wide1 are available.CC4, Text1, Text2, Text3, or Text4.Adjust. ExitFunction. Change Password. System Lock. Movie Rating. TV Rating. Canada Eng. Canada Fre. ExitTV Rating, Canada Eng, and Canada. Fre are only available when System LockMovie RatingFor more information, seeFunction. Changing the password. To change the passwordThe Function menu opens. ExitPassword screen opens. New Password. Confirm Password. SelectParental Controls submenu. The Enter. SelectPassword.Changed" appears on the menu.To set movie control levelsThe Function menu opens. Setting parental control levelsMovie ratings. SelectAdjust. ExitParental Controls submenu. The Enter. Rating. DescriptionSome material may not be suitable forEnter PasswordSelect. Note. ExitIf System Lock is not set to On, theYou can view blocked programs by entering theWhen the TV is turnedSetting the parental control level TV ratings. To set TV parental control levelsThe Function menu opens. Menu SetZoom Mode. Movie RatingAdjust. ExitMovie Ratings are as followsDescriptionFunction. ExitNote. Setting the parental control level Canadian. English ratings. If System Lock is not set to On, theYou can view blocked programs by entering theWhen the TV is turnedExit. AdjustTo set Canadian English parental controlThe Function menu opens. TV RatingWide1. OffExitAdjust. ExitTV Ratings are as follows. DescriptionParental Controls submenu. The Enter. Some of the agebased TV Parental GuidelinesRating. DescriptionEnter Password. ExitSetting the parental control level Canadian FrenchTo set Canadian French parental controlThe Function menu opens. Restore DefaultEnglish Rating submenu opens. Canada EngSelect. ExitCanadian English Ratings are as follows. Children. Children 8 years and above. ExitDescriptionAdult programming. Change PasswordOff.



Note If System Lock is not set to On, the You can view blocked programs by entering the When the TV is turned Select. Exit French Rating submenu opens. Canada Fre Select. Adjust Canadian French Ratings are as follows. Description Children 8 years and above. Children 13 years and above. Children 16 years and above. Adult programming Note. If System Lock is not set to On, the You can view blocked programs by entering the When the TV is turned Adjusting the settings VGA mode only. To adjust the settings for VGA mode Adjust menu opens. The following chart is the suggested screen Format. Resolution. Freq. Hz Signal Out of Range." If this message appears, Changing your computers video The following example shows Windows X Macintosh computer, refer to your Macintosh To change your computers video resolution Display. The Display Properties dialog box Adjust V Position. Clock. Phase. Auto Adjust. Exit Using the DVD player. Playing a DVD. To play a DVD Note. Playback starts automatically if a DVD is already DVD and displays the opening menu. Press STOP twice. Playing an audio CD. To play an audio CD Note. Playback starts automatically if a CD is already STOP to stop playback, or press Using DVD repeat play. You can repeat chapters, titles, or the entire STOP twice. Using CD repeat play. You can repeat tracks or the entire CD using To use repeat play STOP twice. Using a DVD title menu. If a DVD has two or more titles and the DVD has To use a DVD title menu Using a DVD menu. If the DVD has a menu, you can use this menu to To use a DVD menu If another screen opens, repeat Step 2 and. Step 3 to select a feature. Searching for a specified time on a CD To search for a specified time on a CD track Searching for a DVD title or chapter. To search for a DVD title or chapter Changing the DVD audio language. If a DVD has multiple audio languages, you can Searching for a specified time on a DVD. To change the audio language To search for a specified time on a DVD Searching for a specific track on a CD.

This feature only works if the DVD was created When you choose Tip. To search for a specific track The audio language can also be changed through Turning DVD subtitles on and off. To turn subtitles on and off The General Setup icon TURN OFF SUBTITLE appears on the Note. Changing the subtitle language using this method Tip. The subtitle language can also be changed To change your TVs display mode The General Setup icon Exit icon, then press ENTER. To change the subtitle language for the Widescreen images are shown on the Using DVD last memory. Your TV can remember where a DVD stopped DVD combo is turned on and you start DVD Widescreen images are shown on the screen To use last memory The General Setup icon Exit icon, then press ENTER. Turning

the screen saver on and offTo turn the screen saver on and offThe General Setup iconExit icon, then press ENTER. Setting up DVD speaker output. To set up speaker outputThe Setup Menu opens.Exit icon, then press ENTER.SETUP, then press ENTER. The Dolby. Digital Setup Page opens.Exit icon, then press ENTER. Setting up DVD Dolby Digital. To set up Dolby DigitalThe Setup Menu opens.MONO, RIGHT MONO, or MIXED MONO,Exit icon, then press ENTER.Using the DVD equalizer. Setting up DVD 3D sound. You can select preset graphic equalizer patternsTo set up 3D soundThe Setup Menu opens. To use the equalizerThe Setup Menu opens.EQUALIZER, then press ENTER. The. Channel Equalizer Page opens.Exit icon, then press ENTER.Exit icon, then press ENTER.Setting DVD video options. Setting a DVD parental password. To set up video optionsThe Setup Menu opens. To set or change a passwordThe Setup Menu opens.The Password. Setup Page opens.PressLIGHTER, then press ENTER to select.Exit icon, then press ENTER.PARENTAL can beDVD ratings. You cannot play DVDs thatExit icon, then press ENTER.Changing DVD preferences. You can change preferences only when theTo change preferencesThe Setup Menu opens.Exit icon, then press ENTER. To attach the pedestal standCare and handling of discs.

<http://www.marsagri.com/wp-content/plugins/formcraft/file-upload/server/content/files/16273f1938c3a4---broan-qs136ss-manual.pdf>

Handling discs. Do not touch the playback side of the disc. HoldStoring discs. After playing, store the disc in its case. Do notCleaning discs. Fingerprints and dust on the disc can causeNote. Never operate this product immediately afterLeave it for two or three hours without operating it. If you use this product in such a situation, it mayTroubleshootingNo picture orSolution. Picture is OK, but Check the volume level and mute setting.Sound is OK, butCleaning the cabinet. Wipe the front panel and other exterior surfacesPicture has snowMake sure that the antenna is installed correctly. If not, adjust the antenna toward theProblem. Specifications. Solution. Stripes on picture Check for interference from other electronicBad stereo or. SAP sound. Remote controlPanel. A long broadcast distance, or interference fromRemove obstacles between the remote controlTVs IR sensor. Install fresh batteries.Dimensions. Viewing angle. Contrast ratioWith standWithout stand. WeightElectronic tuningFrequency range. StereoInput. Consumption Max.Image is notAdjust the horizontal control. Picture has a few A few bright or dark dots on an LCD screen isNo sound. No image. Bad soundDisc cannot beThe playerRemote controlSolution. Power. Sound. Output. Terminals. Video, SVideo, Audio. Component. Y, Pb Cb, Pr Cr. PC in. DSUB 15pin RGB inA connectorRemove the disc and leave the player onDisconnect the power plug, then reconnect it.DVD player. OperatingAntenna in. Ftype.

<https://www.thebiketube.com/acros-bose-lifestyle-20-service-manual>